

# MOUNTAIN TWISTLOCK 10FT. - W



## PRODUCT DESCRIPTION

Introducing our New 10 ft. Mountain Twistlock W—with curved acrylic side panels that complement the curves of the wave top, curvy acrylic header and rounded tabletop and display feet. There is also a middle beam and extra foot that offers you both a 2-graphic option and an LCD monitor option (Monitor Bracket is an accessory upgrade).

The Mountain Twistlock W is completely toolless. Simply attach hardware connectors to frame by sliding into extrusion grooves and secure into place by twisting knobs. Tubes connect with snap buttons. SEG graphics are placed by hand into extrusion grooves.

<b>DISPLAY DIMENSION</b>	117.3" W x 96" H
<b>GRAPHIC DIMENSIONS</b>	80.5" W x 80" H (Left Side Graphic) 40" W x 80" H (Right Side Graphic)

## GRAPHIC MATERIAL

Stretch Fabric

## GRAPHIC FINISHING

The graphic will be printed on Satin Fabric. Silicone beading will be sewn to the edge of the graphic for graphic installation. The silicone beading will not be visible once the graphic is installed into the frame.

## DISPLAY CONSTRUCTION

Aluminum Frame Construction	Back Wall Hardware
Arch Canopy Frame (2" Aluminum Tubing)	Frosted Plex Header & Wings

## SHIPPING WEIGHTS & DIMENSIONS

Shipping Weight	140 lbs (frame only) 150 lbs (frame with graphics)
Shipping Dimensions	53" H x 20.5" W x 17" D

## LARGE QUANTITY FREIGHT

Freight Shipping	8 boxes per 48" L x 40" W x 68" H skids
Freight Weight	2240 lbs (frame only) 2400 (frame with graphics)



Twistlock Feature

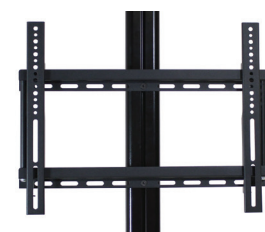
Wheeled Case (included)

## AVAILABLE ACCESSORIES

Acrylic Side Panels - Print Upgrade	Acrylic Header - Print Upgrade
T135 LED Lights	Silver Lights LED
Black Lights LED	Monitor Bracket - 22"- 42" LCD size

## SHELF WEIGHT CAPACITY

30 lbs



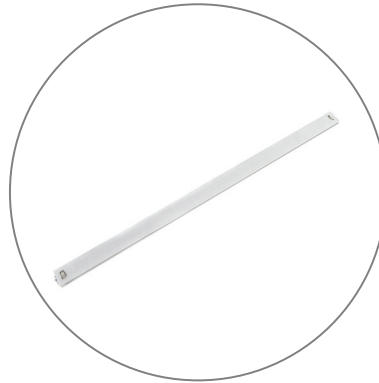
Optional TV Monitor Mount\*

# MOUNTAIN TWISTLOCK 10FT.-W

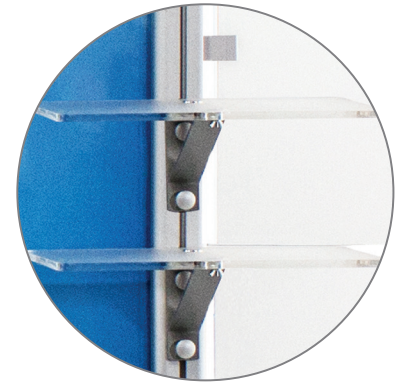
## PARTS LIST



Qty 6 - Vertical Twist  
Lock Extrusions



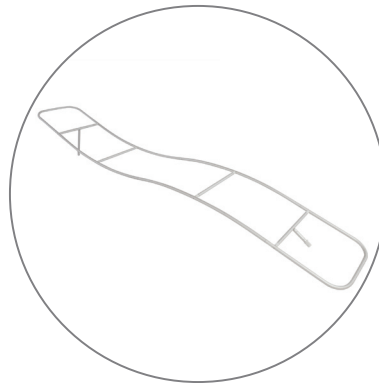
Qty 4 - Horizontal Extrusions



Qty 3 - Small Acrylic  
Shelves with Brackets



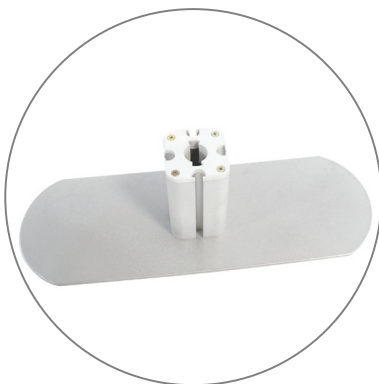
Qty 1 - Acrylic table  
with Brackets



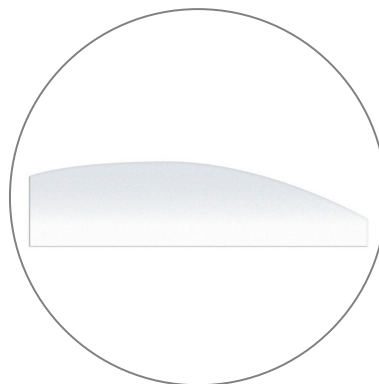
Qty 1 - Canopy Frame  
(w/ Fabric Canopy)



Qty 4 - Acrylic Wings  
with Brackets



Qty 3 - Feet



Qty 1 - Acrylic Header  
with Brackets



Qty 1 - Hard Case