

# COMET T-LEG 2'

PRODUCT #: 1126



T-Leg

## PRODUCT DESCRIPTION

The Comet T-LEG is a new option for our black Comet frames, fit for fabric Silicone Edge Graphics (SEG), will add flair and contrast to your finished design! The Comet T-Leg display comes with two steel feet that are streamline but also provided a wide footprint for stability. This free standing display is available in widths of 2ft, 3ft, 4ft, or 5ft by heights of 6ft, 7ft or 8ft. Graphic packages come standard with double-sided full color dye sublimation fabric prints.

DISPLAY DIMENSION	25.75" W x 72", 84", or 96" H x 24" L
GRAPHIC DIMENSIONS	26" W x 74", 86", or 98" H

## GRAPHIC MATERIAL

Satin Fabric

## GRAPHIC FINISHING

The graphic will be printed on Satin Fabric. Silicone beading will be sewn to the edge of the graphic for graphic installation. The silicone beading will not be visible once the graphic is installed into the frame.

## DISPLAY CONSTRUCTION

Aluminum Extrusion Frame      Steel Feet

## SHIPPING WEIGHTS & DIMENSIONS

Shipping Weight	Box 1: 19 lbs (frame only) 21 lbs (with graphic) Box 2: 2 lbs (T-Leg only)
Shipping Dimensions	Box 1: 74" H x 7" W x 7" D Box 2: 24" H x 24" W x 4" D

## LARGE QUANTITY FREIGHT

Freight Shipping	1st Skid: 28 boxes per 48" L x 40" W x 55" H skids 2nd Skid: 8 boxes per 48" L x 40" W x 16" H skids
Freight Weight	1st Skid: 532 lbs (stand only) 1st Skid: 588 lbs (frame & graphic) 2nd Skid: 32 lbs (T-Leg only)

## PARTS LIST



Qty 4 - Extrusions



Qty 16 - Comet Corner Connectors



Qty 4 - Steel Base



Qty 2 - Socket Screws



Qty 2 - Washer



Qty 2 - Wing Nuts

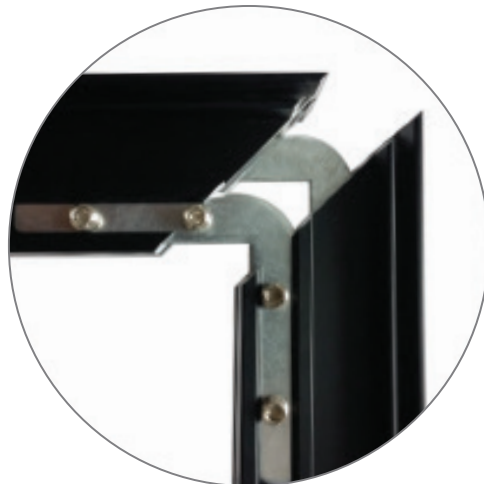


Qty 1 - 3mm Allen Wrench

## REQUIRED TOOLS



3mm Allen Wrench



Insert adjacent extrusions together.



Tighten all socket screws.

## SET UP INSTRUCTIONS 1/2

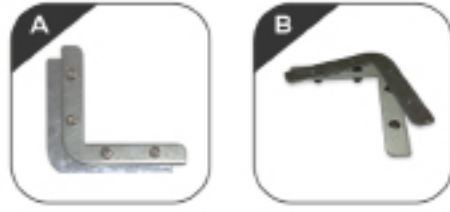
### Step 1

Gather all 4 of the extrusions and lay them out on a flat surface. The extrusions will be linked together using the lock and pressure plates.



### Step 2

Align the lock plate and pressure plate together. Make sure that the socket screws are recessed enough so the two pieces sit flush together.



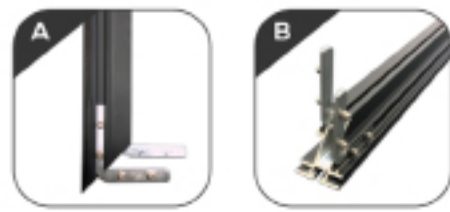
### Step 3

Insert the aligned pieces completely into the slot. Insertion begins at either end of the extrusion. DO NOT TIGHTEN the socket screws.



### Step 4

Repeat step 3 on the back side of the extrusion. Then repeat the same step on the opposite end.



### Step 5

Slide in both adjacent extrusions. These extrusions should match as a pair in length.



### Step 6

Make sure the corners of the extrusions are flush.



### Step 7

Repeat steps 2-5 for the last remaining extrusions. Tighten all socket screws with the 3mm allen key.



### Step 8

The frame is now complete and is now ready for the base to be installed.



## SET UP INSTRUCTIONS 2/2

### Step 9

Locate the (2) pre-drilled holes on the outside of the left and right extrusion.



### Step 10

Align the insert holes in the T-Legs to the pre-drilled holes in the extrusions. Insert the bolts through the T-legs and then the extrusion, respectively.



### Step 11

Once the bolt is completely inserted, screw on the wind nut and then tighten. Repeat the process until both T-Legs are securely attached.



### Step 12

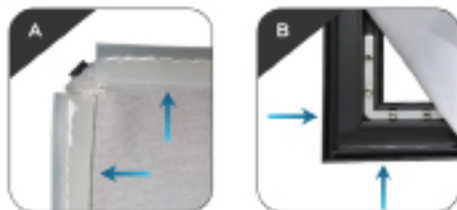
Screw in the leveling feet and then stand the frame up. Your frame is ready to be fitted with the silicone edge graphic (SEG).



### Step 13

A) Locate the silicone edge beading on the back of the graphic, which is swen to the back perimeter.

B) In each corner, insert the silicone edge beading into the groove



### Step 14

A) On each side, insert the remainder of the beading.

B) The graphic should appear flush and completely tucked into the frame. Repeat the process on the back side if using a second graphic.

